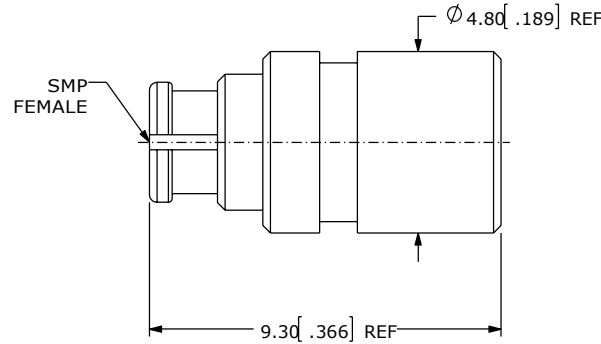
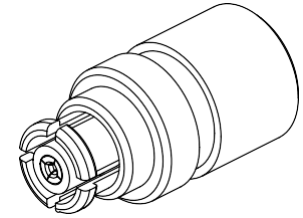


NOTES:

1. ELECTRICAL:
 - 1.1 IMPEDANCE: 50 Ω
 - 1.2 FREQUENCY RANGE: DC ~ 40 GHz
 - 1.3 VSWR: 1.20 MAX @ 18 GHz ; 1.25 MAX @ 26.5 GHz ; 1.30 MAX @ 40GHz
 - 1.4 AVERAGE POWER: 2 W
2. MECHANICAL:
 - DURABILITY: ≥500 CYCLES
3. ENVIRONMENTAL:
 - TEMPERATURE RANGE: -55 °C TO +125°C
4. MATERIAL AND FINISH:
 - 4.1 BODY: BERYLLIUM COPPER,GOLD PLATED
 - 4.2 CENTER CONTACT: BERYLLIUM COPPER,GOLD PLATED
 - 4.3 DIELECTRIC: PTFE, NATURAL




UNITS: MILLIMETERS[INCHES]

		REVISION			
REV.	DESCRIPTION	ECR	DRAWN	APPR	DATE
0	ISSUE FOR REVIEW	N/A	WL	LXP	JUN-10-2018



CUSTOMER OUTLINE DRAWING

ALL OTHER SHEETS ARE FOR INTERNAL USE ONLY

UNLESS OTHERWISE SPECIFIED, DIMENSIONS ARE IN MILLIMETERS. AND TOLERANCES ARE: DECIMALS ANGLES X.X: ± 0.25 [.0100] ± 3° X.XX: ± 0.05 [.0020] X.XXX: ± 0.025 [.0010]	PROPRIETARY NOTE THIS DOCUMENT CONTAINS INFORMATION CONFIDENTIAL AND PROPRIETARY TO MEC ELECTRONICS & COMMUNICATION PVT LTD. AND SHALL NOT BE REPRODUCED OR TRANSFERRED TO OTHER DOCUMENTS OR DISCLOSED TO OTHERS OR USED FOR ANY PURPOSE OTHER THAN THAT WHICH IT WAS OBTAINED WITHOUT THE EXPRESSED WRITTEN CONSENT OF MEC.		
		MEC Electronics and Communication Pvt Ltd RF Products Professional Vendor Connectors - Cable Assemblies - Adaptors - Customizations E-mail: info@mec.org.pk Website: www.mec.org.pk	
		DESC: SMP, FEMALE, 50 OHMS, TERMINATION	
		PN: MEC-TER-050-SMP(F)	
		  SCALE: NTS	REV. 0
		SHEET 1 OF 1	